

OUR COMMUNITY

Fountainhead is a small, professionally managed community, conveniently located on Indy's north side. We offer seven great floor plans to meet your every housing need. In addition to our friendly service, Fountainhead provides spacious apartment homes with private entrances, a lighted dog run, a tennis court and a swimming pool. Our ideal location is surrounded by shopping, dining and great schools. With I-465 just minutes away, you'll have easy access to work and play.

Welcome home!



Fountainhead

APARTMENTS

Date

Leasing Professional

Floorplan

Deposit

Lease Rate

Move-In Date

Other

317-875-9286
Fountainhead@REELiving.com

8101 Laguna Drive
Indianapolis, IN 46260

Monday-Friday: 9am - 6pm
Saturday: 10am - 5pm
Sunday: 12pm - 5pm

Dimensions and square footage are approximate. Features are subject to availability and may change without prior written notice.

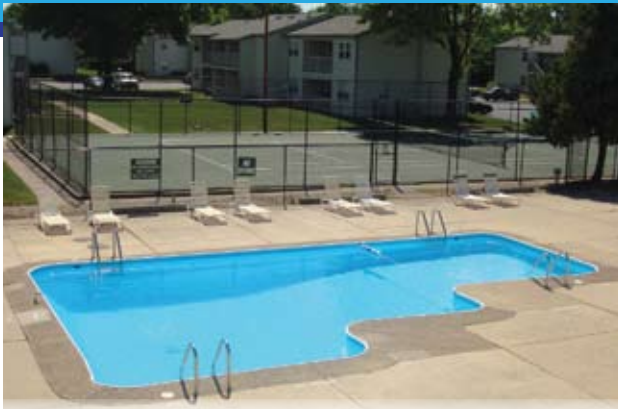


Fountainhead

APARTMENTS



317-875-9286
FountainheadLiving.com



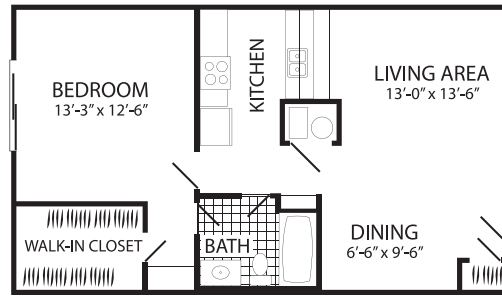
COMMUNITY AMENITIES

- Personal, Professional Management
- 7 Great Floor Plans: Studios, 1, 2 & 3 BRs
- 24 Hour Emergency Maintenance
- All Pets Welcome & Lighted Dog Run
- Sparkling Pool with Sun-Deck
- Natural Spring Fed Duck Pond
- Tennis Court
- Sand Volleyball
- On-site Laundry Facilities
- Copier, Fax & Notary Services
- Flexible Lease Terms
- Water, Sewer & Trash Included
- Nightly On-site Courtesy Officer

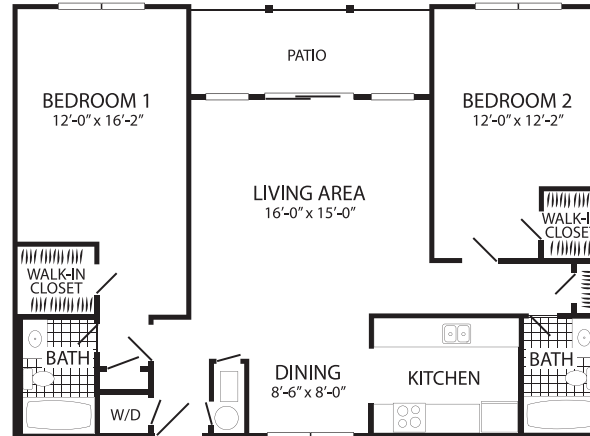
317-875-9286

Fountainhead@REELiving.com

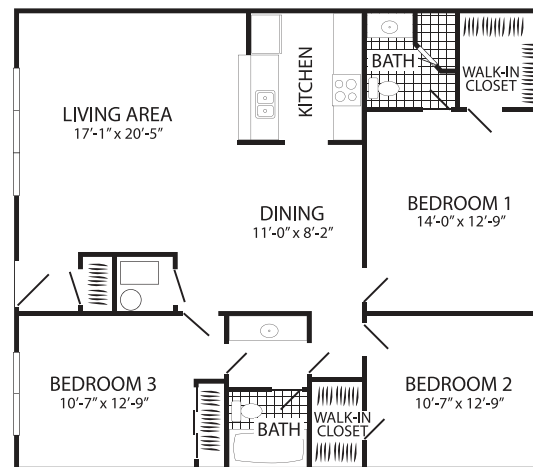
8101 Laguna Drive
Indianapolis, IN 46260



663 Sq. Ft | \$ _____ /month



1,050 Sq. Ft | \$ _____ /month



1,150 Sq. Ft | \$ _____ /month



APARTMENT AMENITIES

- Private Entrances
- Walk-In Closets
- Private Patios or Balconies
- Central Heating & Air
- Washers & Dryers in Select Apartments
- Vertical Blinds & Ceiling Fans

